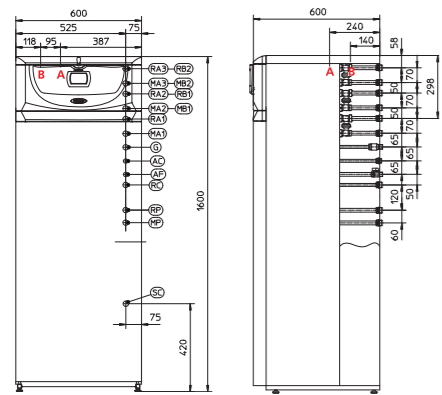


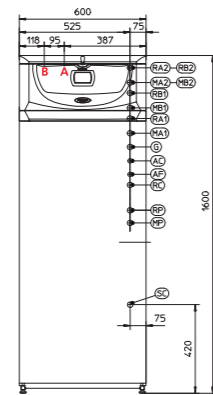
Technical Information

CE 0051BT3717

HERCULES Condensing 26
HERCULES Condensing 32



HERCULES Condensing ABT 32



KEY

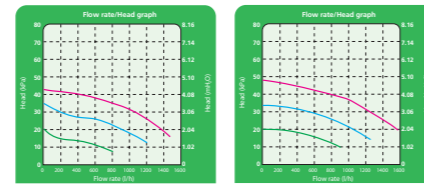
- | | | | |
|-----|----------------------------|----|---------------------------|
| V | Electrical connection | G | Gas supply |
| RA3 | High temp. zone 3 return | AC | Hot domestic water outlet |
| MA3 | High temp. zone 3 delivery | AF | Cold domestic water inlet |
| RA2 | High temp. zone 2 return | RC | Recirculation |
| MA2 | High temp. zone 2 delivery | RP | Solar panels return |
| RB2 | Low temp. zone 2 return | MP | Solar panels flow |
| MB2 | Low temp. zone 2 delivery | SC | Condensate drain |
| RB1 | Low temp. zone 1 return | A | Flue outlet/air inlet |
| MB1 | Low temp. zone 1 delivery | B | Air inlet |
| RA1 | High temp. zone 1 return | | |
| MA1 | High temp. zone 1 delivery | | |

Hydraulic connections

| | Gas | System | | | | | | Domestic hot water | | |
|---------------------------|------|------------|------------|------------|------------|------------|----------|--------------------|------|--|
| | G | MA1 RA1 | MA2 RA2 | MA3 RA3 | MB1 RB1 | MB2 RB2 | AC AF | MP RP | RC | |
| HERCULES Cond. 26 2 E | 1/2" | 3/4" | 3/4" | 3/4" | 1" | 1" | 1/2" | 3/4" | 1/2" | |
| HERCULES Cond. 32 2 I | 1/2" | 3/4" | 3/4" | 3/4" | 1" | 1" | 1/2" | 3/4" | 1/2" | |
| HERCULES Cond. ABT 32 2 I | 1/2" | 3/4" | 3/4" | - | 1" | 1" | 1/2" | 3/4" | 1/2" | |

Connections in grey refer to optional kit

High temperature zones Low temperature zones



Available head in the system:
 ■ with zone circulator speed set to maximum
 ■ with zone circulator speed set to 4,5 (factory setting)
 ■ with zone circulator speed set to 3

Technical data

| Code | Unit of measurement | HERCULES Cond. 26 2 E | HERCULES Cond. 32 2 I | HERCULES Cond. ABT 32 2 I |
|--|---------------------|-------------------------|-------------------------|---------------------------|
| | N.G. L.P.G. | 3.019196 3.019196GPL | 3.019197 3.019197GPL | 3.019198 3.019198GPL |
| Maximum nominal heat input (domestic hot water mode) | kW | 26,9 | 33,0 | 33,0 |
| Maximum nominal heat input (central heating mode) | kW | 24,9 | 33,0 | 33,0 |
| Minimum nominal heat input | kW | 5,0 | 7,3 | 7,3 |
| Maximum nominal heat output (domestic hot water mode) | kW | 25,8 | 32,0 | 32,0 |
| Maximum nominal heat output (central heating mode) | kW | 23,9 | 32,0 | 32,0 |
| Minimum nominal heat output | kW | 4,7 | 6,9 | 6,9 |
| Efficiency at nominal heat output (80/60°C) | % | 96,0 | 96,9 | 96,9 |
| Efficiency at 30% of load (80/60°C) | % | 101,1 | 101,9 | 101,9 |
| Efficiency at nominal heat output (40/30°C) | % | 106,5 | 107,3 | 107,3 |
| Efficiency at 30% of load (40/30°C) | % | 106,5 | 107,3 | 107,3 |
| Gas consumption at nominal heat output with natural gas | m³/h | 2,85 | 3,49 | 3,49 |
| Weighted CO | mg/kWh | 20 | 17 | 17 |
| Weighted NOx | mg/kWh | 48 | 52 | 52 |
| D.H.W. flow rate for continuous service with ΔT=30°C, according to EN13203-1 | l/min | 13,3 | 16,0 | 16,0 |
| D.H.W. circuit max pressure | bar | 8 | 8 | 8 |
| Min. dynamic D.H.W. circuit pressure | bar | 0,3 | 0,3 | 0,3 |
| D.H.W. expansion vessel capacity | litres | 5 | 5 | 5 |
| Central heating circuit max pressure | bar | 3 | 3 | 3 |
| Central heating expansion vessel capacity | litres | 12 | 12 | 12 |
| Protection index | IP | X5D | X5D | X5D |
| Full appliance weight | Kg | 252 | 254 | 256 |



During the life of a boiler, performance is influenced by external factors, e.g. water hardness, atmospheric agents, system limiting, etc. The published data refers to new products correctly installed and used, in accordance with local regulations. N.B. we recommend regular periodic maintenance of the appliance.



Immergas S.p.A. - 42041 Brescello (RE) Italy - T. +39.0522.689011 - F. +39.0522.689178 - immergas.com

Immergas respects the environment and uses only recycled paper



Immergas reserves the right to make such changes to its products as are deemed necessary for their evolution, without prior notice. Cod. CE.0414 - Rev. 000 (ver. Mkt. Exp.) - 12/08



HERCULES Condensing

Floor standing condensing boilers with built-in storage tank

HERCULES CONDENSING 100% COMFORT

CARE FOR THE CUSTOMER

Nobody wants to give up to wellbeing and comfort, especially inside their homes.

Immergas knows well the importance of the home in the customers' lives and, thanks to its over 40 years experience in the design and manufacture of domestic boilers, is always able to anticipate their exigencies and offer the ideal product to satisfy their needs.

With these assumptions was born the new range of floor standing condensing boilers with built-in storage tank HERCULES Condensing.

RESPECT FOR THE ENVIRONMENT

The condensing technology, characterizing the new HERCULES Condensing models, allows for a more intelligent use of the combustion heat compared with the traditional appliances and implies great advantages in terms of ecology and efficiency.

The reduced emissions of carbon monoxide (CO) and nitrogen oxide (NOx) ascribe HERCULES Condensing models to class 5, the most ecological one, in the UNI EN 297 and UNI EN 483 European standard classification.

The HERCULES Condensing advanced electronic system allows in any moment to adapt the heat output to the real exigencies of the system. Even when the climatic conditions change, comfort and wellness are guaranteed inside your home, as well as a more conscious use of the combustible gas.

THE MODELS

The HERCULES Condensing range is available in three models and two power levels:

- HERCULES Condensing 26 features a nominal output of 24 kW in the heating function and of 26 kW in the sanitary function;
- HERCULES Condensing 32 and HERCULES Condensing ABT 32 have a nominal output of 32 kW in both the function modes.

HERCULES Condensing models represent the best from every point of view and are ment for those who don't want to come to compromises.



HERCULES CONDENSING
ECO-FRIENDLY CONDENSING
BOILERS
TOP OF TECHNOLOGY
120 LITRE STAINLESS STEEL
STORAGE TANK
DESIGNED FOR MULTI-ZONE
HEATING SYSTEMS



DESIGN AND FUNCTIONALITY

The new HERCULES Condensing range stands out for the modern and elegant line: a perfect union of design, technology and functionality.

The wide and functional back-lit liquid crystals display, makes it easier to read all the main information, such as the set temperatures, the functioning modes and the possible errors.

The HERCULES Condensing advanced electronics makes fast and simple the setting of the desired temperatures and the summer/winter mode, thanks to the intuitive use of the keys and the side knobs. The technology of this new range of boilers allows also to visualize other information, such as the functioning hours, the number of ignitions or to set different options like the constant back-lighting or the energy saving mode and, in combination with the external probe, to take the minimum and maximum temperatures.



COMFORT IN ALL SENSES

Even from the sanitary comfort point of view, HERCULES Condensing boilers represent a choice without compromises. The 120 litre stainless steel storage tank is a practically inexhaustible sanitary hot water reserve, always available at the desired temperature. Such a feature guarantees the maximum comfort even in case of more contemporary water withdrawals or a hydromassage bathtub.

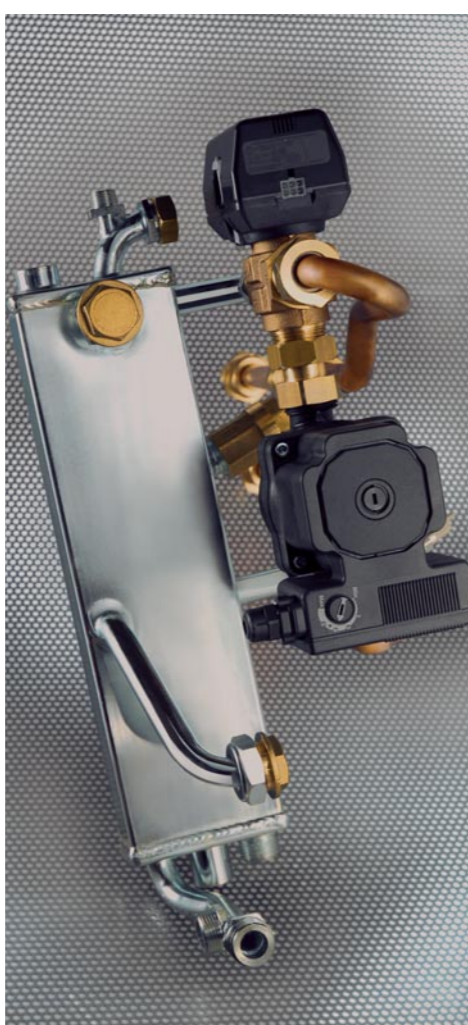
The special construction of the storage tank gives also the possibility of connection to solar panels for the integrated production of hot sanitary water using renewable energetic sources.

THE BEST THERMOREGULATION

The potentiality of HERCULES Condensing boilers can be further improved by combining an efficient thermoregulation system: these boilers are in fact prearranged to operate with the new Super CAR remote control and the external probe.

The Super CAR remote control replaces the boiler control panel carrying out all its functions: equipped with a back-lit display, similar to the boiler's one, allows to visualize all functioning information. This feature is particularly useful when the boiler is installed in the cellar or in the attic, allowing to manage the appliance directly from the living room.

The Super CAR remote control can be also used as weekly thermostat to set the room temperature at two levels (comfort and reduced), and can be set as daily sanitary timer at two temperature levels.



INSTALLATION FLEXIBILITY

Each home is different from the other, as each life style. For this reason, even the boiler needs to adapt the each specific exigency.

HERCULES Condensing 26 and 32 models are prearranged to serve a single heating system. The ABT version can manage two separate heating systems, operating at two temperature levels. This special configuration is ideal when the heating system is divided into a main zone with radiant panels (functioning at low temperature) and another zone operating at high temperature (for example a bathroom with a towel warmer).

Moreover all versions can be personalized thanks to a series of dedicated hydraulic accessories and can therefore control up to a maximum of three different systems, both in case of traditional radiator systems and floor panels. The result is a dedicated and independent thermoregulation for each zone, giving great comfort and optimizing consumptions.

The peculiarity distinguishing HERCULES Condensing boilers on the market is that all devices are placed inside the mantle. Therefore, no extra brickworks are required around the boiler, making its installation extremely clean and neat.



CHARACTERISTICS OF THE RANGE

- Modulating heat output range from 4,7 kW to 32 kW
- New design
- Wide liquid crystals backlit display
- High efficiency and low pollutant emissions thanks to condensing technology
- Stainless steel storage tank with capacity of 120 litres
- 3 star marking of sanitary comfort
- Pre-arranged for functioning in high/low temperature heating systems
- Pre-arranged for functioning in multi-zone heating systems
- Stainless steel condensing module
- Modulating heating pumps with low power consumption
- Hydraulic connections easy to reach thanks to the side door
- Optimum seasonal performances thanks to thermoregulation options such as Super CAR, CAR and external probe
- Per-arranged for solar systems integration for the domestic hot water production



| Model | Heat output kW | | Storage tank capacity | Efficiency rating (D.P.R. 660/96) | Reduced pollutant emission (NOx-CO) | Protection index | Frost protection | D.H.W. flow rate (30°C increase) | |
|-----------------------|----------------|--------|-----------------------|-----------------------------------|-------------------------------------|------------------|------------------|----------------------------------|---------------------------|
| | C.H. | D.H.W. | | | | | | Specific flow rate (EN6625) | Cont. service (EN13203-1) |
| HERCULES Cond. 26 | 24,0 | 26,0 | 120 litres | 4 stars | ■ | IPX5D | 0°C | 19,9 l/min | 13,3 l/min |
| HERCULES Cond. 32 | 32,0 | 32,0 | 120 litres | 4 stars | ■ | IPX5D | 0°C | 24,3 l/min | 16,0 l/min |
| HERCULES Cond. ABT 32 | 32,0 | 32,0 | 120 litres | 4 stars | ■ | IPX5D | 0°C | 24,3 l/min | 16,0 l/min |